

FLOWMETERS

MODEL FM500

FLOW RANGE

.50 to 5 gallons per minute
(2 to 19 liters per minute)

PRESSURE DROP

1 PSI (6.9 kPa) @ 5 GPM (19 lpm)



MAX. OPERATING PRESSURE

500 PSI (35-bar)

CONSTRUCTION

Housing - Glass filled Polypropylene
Turbine - Polypropylene w/ Nivapoint
or Hastelloy® shaft
Gasket - Viton O-ring

BEARING MATERIAL

Ruby and sapphire

INLET/OUTLET SIZE

1/2" female NPT

WEIGHT

.177 lbs. (.080 kg)

DIMENSIONS

3.58" x 1.77" max. diameter
(9.09 cm x 4.50 cm)

SENSOR

Hall-effect

TYPICAL "K-FACTOR" (PPG)

1550.0

MODEL FM750 GFN

FLOW RANGE

2 to 40 gallons per minute
(7 to 150 liters per minute)

PRESSURE DROP

1 PSI (6.9 kPa) @ 19 GPM (72 lpm)



MAX. OPERATING PRESSURE

150 PSI (10-bar)

CONSTRUCTION

Housing - Glass-filled nylon
Turbine - Noryl GTX with Hastelloy®
shaft
Gasket - Viton Quad O-ring

BEARING MATERIAL

Tungsten carbide, carbon graphite;
other materials available

INLET/OUTLET SIZE

3/4" female NPT

WEIGHT

0.435 lbs. (.197 kg)

DIMENSIONS

6" x 3.22" max. diameter
(15.24 cm x 8.18 cm)

SENSOR

Hall-effect

TYPICAL "K-FACTOR" (PPG)

150.0



All flowmeters shown are manufactured and sold by Micro-Trak. Several other flowmeters are available. Contact Micro-Trak for details. All specifications are subject to change without notice.

MODEL FM750 LF (LOW FLOW)

FLOW RANGE

.5 to 12 gallons per minute
(1.9 to 45 liters per minute)



PRESSURE DROP

1 PSI (6.9 kPa) @ 5 GPM (19 lpm)

MAX. OPERATING PRESSURE

150 PSI (10-bar)

BEARING MATERIAL

Ruby, carbon graphite

INLET/OUTLET SIZE

3/4" female NPT

WEIGHT: 0.435 lbs. (.197 kg)

DIMENSIONS

6" x 3.22" max. diameter
(15.24 cm x 8.18 cm)

SENSOR: Hall-effect

TYPICAL "K-FACTOR" (PPG)

480.0

CONSTRUCTION

Housing - Glass-filled nylon
Turbine - Noryl GTX with
Hastelloy® shaft
Gasket - Viton Quad O-ring

MODEL FM270

FLOW RANGE

3.5 to 70 gallons per minute
(13 to 265 liters per minute)

PRESSURE DROP

1 PSI (6.9 kPa) @ 28 GPM (106 lpm)
6.5 PSI (44.8 kPa) @ 70 GPM (265 lpm)



MAXIMUM OPERATING PRESSURE

125 PSI (8.9-bar)

CONSTRUCTION

Housing - Glass-filled Polypropylene
Turbine - Noryl GTX with Hastelloy®
shaft

BEARING MATERIAL

Ruby, carbon graphite;
Other materials available

MODEL FM750 SS

FLOW RANGE

2 to 40 gallons per minute
(7 to 150 liters per minute)

PRESSURE DROP

1 PSI @ 19 GPM (72 lpm)
4 PSI @ 40 GPM (151 lpm)



MAX. OPERATING PRESSURE

500 PSI (35-bar); higher pressure
models available

CONSTRUCTION

Housing - 316 stainless steel
Turbine - Noryl GTX with
Hastelloy® shaft
Gasket - Teflon

BEARING MATERIAL

Ruby, carbon graphite; other
materials available

INLET/OUTLET SIZE

3/4" female NPT

WEIGHT: 2.30 lbs. (1.04 kg)

DIMENSIONS

6" x 3.05" max. diameter
(15.24 cm x 7.75 cm)

SENSOR: Hall-effect

TYPICAL "K-FACTOR" (PPG): 155.0

MODEL FM1500 SS

FLOW RANGE

10 to 130 gallons per minute
(38 to 492 liters per minute)

MAX. OPERATING PRESSURE

500 PSI (35-bar)

CONSTRUCTION

Housing - 316 stainless steel
Turbine - Noryl GTX with Hastelloy®
shaft



BEARING MATERIAL

Ruby, carbon graphite

CLIP RING MATERIAL

Stainless Steel

INLET/OUTLET SIZE

1 1/2" female NPT

WEIGHT: 4.20 lbs. (1.91 kg)

DIMENSIONS

5.91" x 3" max. diameter
(15.01 cm x 7.62 cm)

SENSOR: Hall-effect

TYPICAL "K-FACTOR" (PPG): 110.0

CLIP RING MATERIAL

Stainless Steel

INLET/OUTLET SIZE

2" Flange

WEIGHT

1.48 lbs. (.671 kg)

DIMENSIONS

4.5" x 3.75" max. diameter
(11.4 cm x 9.5 cm)

SENSOR: Hall-effect

TYPICAL "K-FACTOR" (PPG)

145.0

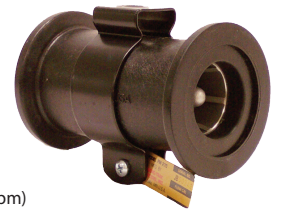
FLOWMETERS

MODEL FM10-100

FLOW RANGE
10 to 100 gallons per minute
(38 to 380 liters per minute)

PRESSURE DROP
1 PSI (6.9 kPa) @ 29 GPM (109 lpm)
10.3 PSI (71 kPa) @ 100 GPM (378 lpm)

MAX. OPERATING PRESSURE
125 PSI (8.9-bar)



CONSTRUCTION

Housing - Glass-filled Polypropylene
Turbine - Noryl GTX with Hastelloy® shaft

BEARING MATERIAL
Ruby, carbon graphite;
Other materials available

CLIP RING MATERIAL
Stainless Steel

INLET/OUTLET SIZE
2" Flange

WEIGHT: 1.37 lbs. (.621 kg)

DIMENSIONS
4.5" x 3.75" max. diameter
(11.4 cm x 9.5 cm)

SENSOR: Hall-effect

TYPICAL "K-FACTOR" (PPG): 100.0

MODEL FM3000 PSS

FLOW RANGE
40 to 396 gallons per minute
(150 to 1500 liters per minute)

MAX. OPERATING PRESSURE
870 PSI (60-bar)

CONSTRUCTION
Housing - Stainless Steel
Turbine - Stainless Steel

BEARING MATERIAL
Ceramic

INLET/OUTLET SIZE
3" Male NPT



WEIGHT: 9.25 lbs. (4.2 kg)

DIMENSIONS
10.26" x 3.00" max. diameter
(26.3 cm x 7.62 cm)

SENSOR: Inductive

TYPICAL "K-FACTOR" (PPG): 100.0

MODEL FM2000 P

FLOW RANGE
19 to 198 gallons per minute
(75 to 750 liters per minute)

MAX. OPERATING PRESSURE
285 PSI (20-bar)



CONSTRUCTION

Housing - Glass-filled Polypropylene
Turbine - Stainless Steel

BEARING MATERIAL
Ceramic

INLET/OUTLET SIZE: 2" Flange

WEIGHT: .8 lbs. (.37 kg)

DIMENSIONS

6.75" x 3.0" max. diameter
(17.3 cm x 7.62 cm)

SENSOR: Inductive

TYPICAL "K-FACTOR" (PPG): 100.0

MODEL FM1000 SS

FLOW RANGE
3.5 to 70 gallons per minute
(13 to 265 liters per minute)

PRESSURE DROP
1 PSI (6.9 kPa) @ 30 GPM (114 lpm)
6 PSI (41.4 kPa) @ 70 GPM (265 lpm)

MAX. OPERATING PRESSURE
500 PSI (35-bar)



WEIGHT
2.70 lbs. (1.22 kg)

DIMENSIONS
6" x 3.05" max. diameter
(15.24 cm x 7.75 cm)

SERVOS



MICRO-TRAK
SYSTEMS, INC.

P. O. Box 99 • 111 East LeRay Avenue
Eagle, Lake, MN 56024

CONSTRUCTION

Housing - 316 stainless steel
Turbine - Noryl GTX with Hastelloy® shaft
Gasket - Teflon

BEARING MATERIAL
Ruby, carbon graphite;
Other materials available

INLET/OUTLET SIZE
1" female NPT

SENSOR: Hall-effect

FLANGED SERVO VALVE

12 volt
Rugged and Reliable
Connects to either Banjo style 2" flange or 1½" NPT
Available with either 1" or 1½" butterfly



1" SERVO VALVE

12 volt
Rugged and Reliable
1" NPT Threads



¾" SERVO VALVE

6 volt
Rugged and Reliable
¾" NPT Thread



Accurate and Affordable Electronics from Micro-Trak

111 East LeRay Avenue • Eagle Lake, MN 56024 • 507-257-3600 • Fax: 507-257-3001

Visit www.micro-trak.com or email: trakmail@micro-trak.com for a complete dealer/distributor listing